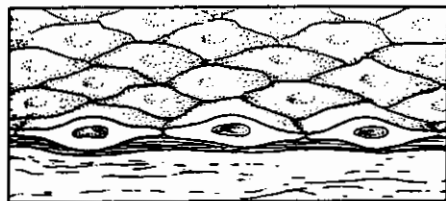
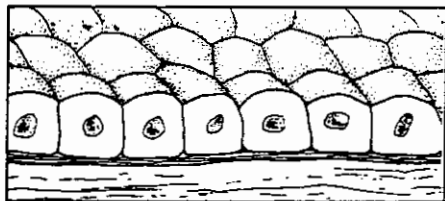


Tissues of the Body

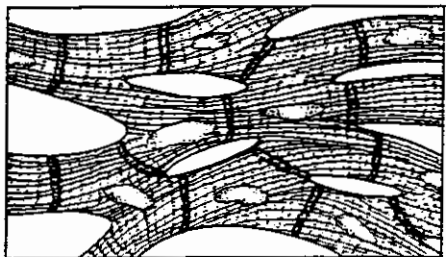
Twelve tissue types are diagrammed in Figure 3-6. Identify each tissue type by inserting the correct name in the blank below it on the diagram.



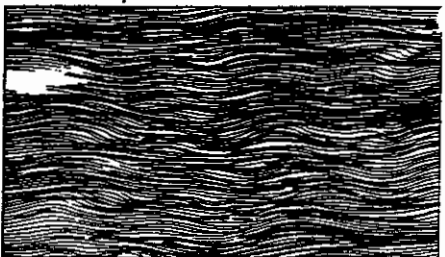
A _____



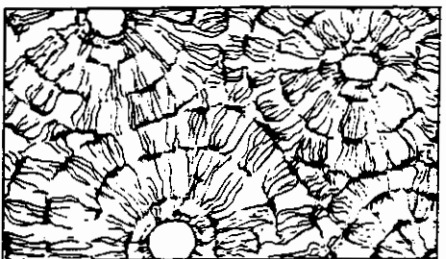
B _____



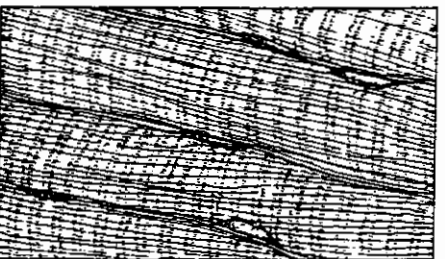
C _____



D _____

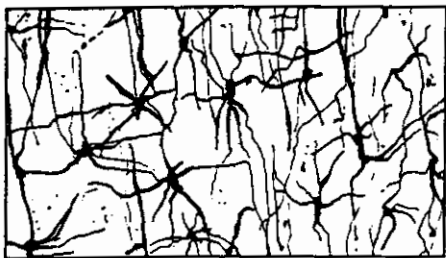


E _____



F _____

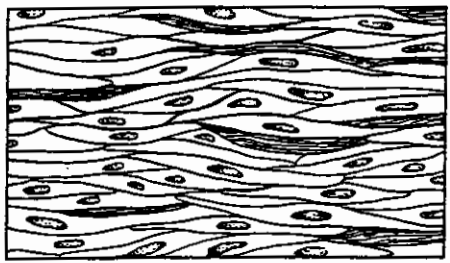
Figure 3-6, A - F



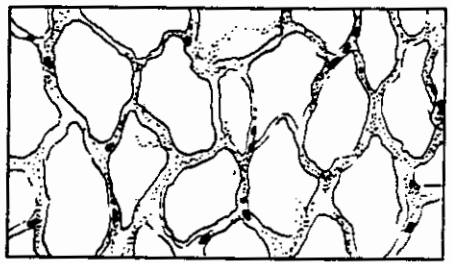
G _____



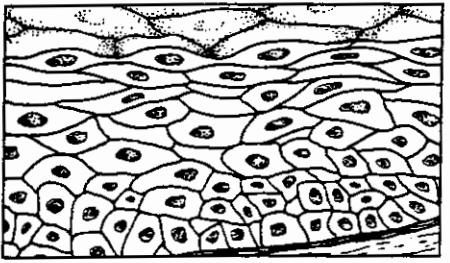
H _____



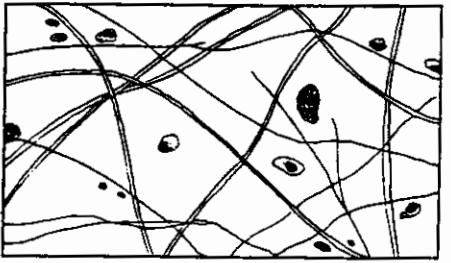
I _____



J _____



K _____



L _____

Figure 3-6, G-L